

FX3S

MELSEC Compact PLC

The entry
into the world of compact controller



High performance at minimal size



Maximum flexibility even in small-scale systems



Built-in USB port for communication and programming



Extra expandability due to several expansion options

New possibilities



The FX3S is used in a wide range of applications.



The FX3S offers communication and real time control from a single unit.

Mitsubishi Electric introduces the FX3S Programmable Logic Controller – the new entry level model for the proven FX3 series. Notable attributes of the FX3S PLC are its flexibility and expandability. It allows users to choose only the functionality necessary to perform a specific application, saving on hardware costs.

The FX3S series PLC provides full function PLC control, built-in high-speed inputs and outputs, available relay outputs, and multiple, built-in communication ports. It also includes expansion options for communications, analog, and temperature control. As part of the FX3 series, the FX3S can use many of the existing programming resources that are available for other FX3 series PLCs. This greatly reduces time and costs for system set up.

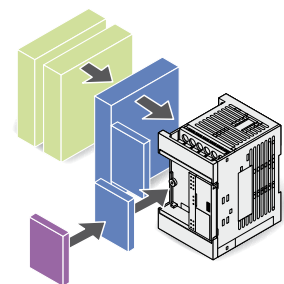
The FX3S PLC is designed to handle basic control tasks, such as simple positioning or analog, and temperature control operations. It excels in small, standalone applications that don't require complex control tasks.

The compact PLC is especially well suited for food and beverage applications, as well as material handling, and fan and pump applications for irrigation and building automation.

Enhanced expandability

Beside the standard built-in RS422 interface port for serial communication with 115.2 kbps, the FX3S can use a large range of adapters providing RS232, RS485, RS422 and Ethernet communications options. These can be used to connect and control various third party products such as bar code readers or panel printers. In addition, compact expansion boards for additional digital inputs and outputs are available, which can be plugged directly into the controller without any additional installation space required on the right or left of the controller. A memory cassette to extend the integrated memory can additionally be connected.

On the left side of the PLC, special adapter for analog inputs, Ethernet and serial communication (compatible with MODBUS) can be easily connected. Further, a built-in USB port (MINI B) on the front panel permits convenient connection to any PC or laptop for high speed program uploads and downloads along with monitoring.



High-speed operation

The FX3S processes basic instructions in 0.21 μ s, which is faster by approximately 3 times compared with its predecessor, the FX1S. For users this means quicker program response and more accurate process performance as inputs, outputs and actions are processed and monitored more times per second.

Ample program capacity

In total, the built-in maintenance free EEPROM of the FX3S can store up to 16,000 steps. 4,000 steps are reserved for the PLC program and up to 12,000 steps can be used for comments.

The CPU of the FX3S supports in common 116 different applied instructions. Beside floating point instructions also dedicated instruction for frequency inverter communication are supported.

Analog value processing

The FX3S is also available with 2 integrated analog inputs (FX3S-30M□-2AD). Along with an optional analog expansion module up to 6 analog values can then be measured and processed with this model.

Built-in positioning control

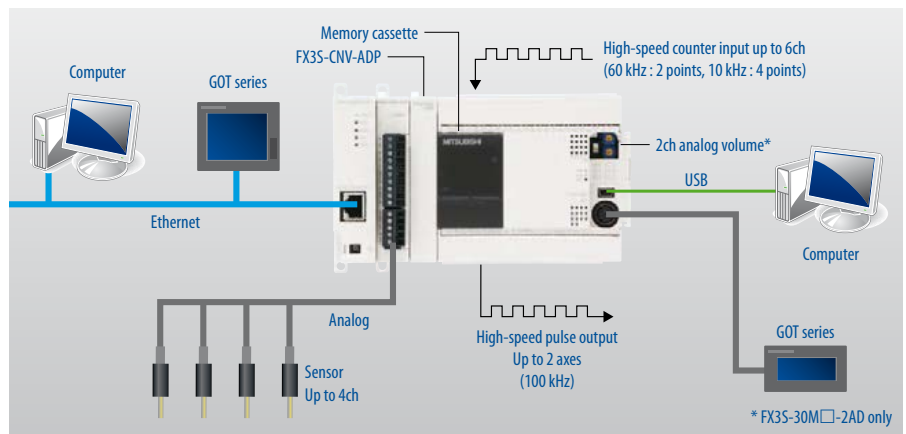
The FX3S series comes with high speed counters (up to 60 kHz) and pulse train outputs (for 2 axes and up to 100 kHz). The high speed counters can be configured in a single or two phase input.

Pulse train outputs can be configured to provide continuous pulse streams at different frequencies or a set quantity of pulses



Simple positioning operations in compact production cells

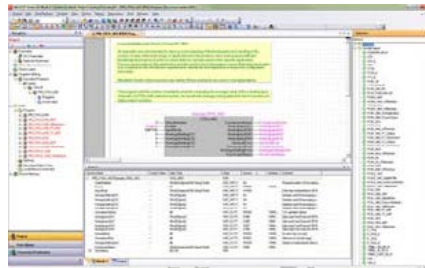
at a single frequency. Simple positioning solutions can be effectively managed this way without much hardware and programming effort.



System configuration example

Programming made easy

The FX Family has a simple programming structure combining Basic and Applied instructions. The Basic instructions are common to all FX Family PLCs. Applied instructions provide the specialist control options such as data comparisons, PID and communications control, all of which are available on FX3S.



Programming with GX Works2

For the programming of the FX3S, GX Works2 is the first choice. This powerful, intuitive, and efficient programming tool reduces program development time and has an easy to use interface.

It is part of Mitsubishi Electric's integrated engineering environment iQ Works.

Compatibility with global standards

The FX3S conforms to the EC Directive and UL Standard, which make it to a product to trust. Even more flexibility is achieved with the choice between sink or source inputs.



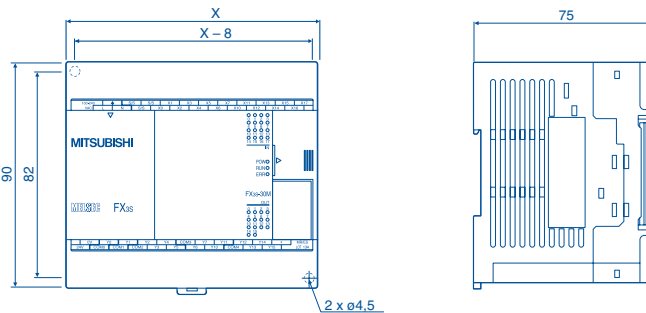
Specifications

Specifications	FX3S-10M□	FX3S-14M□	FX3S-20M□	FX3S-30M□	FX3S-30M□-2AD	
I/O points	Max. 30					
Address range	X0–X17/Y0–Y15 (octal)					
Power supply	100–240 V AC, 50/60 Hz or 24 V DC				100–240 V AC	
Program memory	16,000 steps EEPROM (internal), exchangeable EEPROM memory cassette; program capacity is limited to 4,000 steps					
Instruction Time	0.21 µs/basic instruction					
Integrated digital inputs	Number of inputs	6	8	12	16	
	Input signal voltage	24 V DC (±10 %)				
	Input form	sink/source				
	Response time	Approx. 10 ms				
	Isolation	Photocoupler isolation				
Integrated analog inputs	Number of inputs	–			2	
	Analog input range	–			0–10 V DC	
Integrated outputs	Number of outputs	4	6	8	14	
	Switching voltage	<240 V AC, <30 V DC (relay output), 5–30 V DC (transistor output)				
	Output type/form	Relay or transistor				
	Max. load	resistive	2 A/point, max. 8 A for 4 output points/common terminal (relay), 0.5 A/point; max. 0.8 A for 4 output points/common terminal (transistor)			
		inductive	80 VA (relay), 12 W/point (at 24 V DC); max. 19.2 W for 4 output points/common terminal (transistor)			
	Response time	10 ms (relay), <5 µs (for Y000 and Y001)/0.2 ms (for all other outputs) (transistor)				
Isolation	Photocoupler isolation					
High-speed counters	21 total, with 16 1-phase (C235–C250) and 5 2-phase (C251–C255)					
Counting range	–2,147,483,648–2,147,483,647					
Service power supply	24 V DC, 400 mA					
Environment	0–55 °C ambient temperature; 5–95 % relative humidity					

Dimensions

Type	X
FX3S-10M□	60
FX3S-14M□	60
FX3S-20M□	75
FX3S-30M□	100
FX3S-30M□-2AD	100

All dimensions in mm



European Offices

Mitsubishi Electric Europe B.V. Gothaer Straße 8 D-40880 Ratingen Phone: +49 (0)2102 / 486-0	Germany	Mitsubishi Electric Europe B.V. 52, bld. 3 Kosmodamianskaya nab 8 floor RU-115054 Moscow Phone: +7 495 / 721 2070	Russia
Mitsubishi Electric Europe B.V. Radlická 751/13e Avenir Business Park CZ-158 00 Praha 5 Phone: +420 251 551 470	Czech Rep.	Mitsubishi Electric Europe B.V. Carretera de Rubí 76-80 Apdo. 420 E-08190 Sant Cugat del Valles (Barcelona) Phone: +34 (0) 93 / 5653131	Spain
Mitsubishi Electric Europe B.V. 25, Boulevard des Bouvets F-92741 Nanterre Cedex Phone: +33 (0)1 / 55 68 55 68	France	Mitsubishi Electric Europe B.V. (Scandinavia) Fjellvegøen 8 SE-22736 Lund Phone: +46 (0) 8 625 10 00	Sweden
Mitsubishi Electric Europe B.V. Vale Colleoni 7 Palazzo Sirio I-20864 Agrate Brianza (MB) Phone: +39 039 / 60 53 1	Italy	Mitsubishi Electric Turkey Elektrik Ürünleri A.Ş. Serifali Mahallesi Nutuk Sokak No:5 TR-34775 Ümraniye-İSTANBUL Phone: +90 (0)216 / 526 39 90	Turkey
Mitsubishi Electric Europe B.V. Westgate Business Park, Ballymount IRL-Dublin 24 Phone: +353 (0)1 4198800	Ireland	Mitsubishi Electric Europe B.V. Travellers Lane UK-Hatfield, Herts. AL10 8XB Phone: +44 (0)1707 / 28 87 80	UK
Mitsubishi Electric Europe B.V. ul. Krakowska 50 PL-32-083 Balice Phone: +48 (0) 12 630 47 00	Poland	Mitsubishi Electric Europe B.V. Dubai Silicon Oasis United Arab Emirates - Dubai Phone: +971 4 3724716	UAE

Representatives

GEVA Wiener Straße 89 A-2500 Baden Phone: +43 (0)2252 / 85 55 20	Austria	Beijer Electronics A/S Lykkegårdsvej 17 DK-4000 Roskilde Phone: +45 (0)46 / 75 76 66	Denmark	Beijer Electronics SIA Ritaušmas iela 23 LV-1058 Rīga Phone: +371 (0)6 / 784 2280	Latvia	Sirius Trading & Services Aleea Lacul Morii Nr. 3 RO-060841 Bucuresti, Sector 6 Phone: +40 (0)21 / 430 40 06	Romania	I.C. SYSTEMS Ltd. 23 Al-Saad-Al-Alee St. EG-Sarayut, Maadi, Cairo Phone: +20 (0) 2 / 235 98 548	Egypt
OOO TECHNIKON Prospect Nezavisimosti 177-9 BY-220125 Minsk Phone: +375 (0)17 / 393 1177	Belarus	HANS FOLSGAARD A/S Theilgaardsv Torv 1 DK-4600 Køge Phone: +45 4320 8600	Denmark	Beijer Electronics UAB Goštautu g. 3 LT-48324 Kaunas Phone: +370 37 262707	Lithuania	INEA SR d.o.o. Ul. Karadordjeva 12/217 SER-11300 Smederevo Phone: +381 (0)64 / 68 55 187	Serbia	GIRIT CELADON Ltd. 12 Haomant Street IL-42505 Netanya Phone: +972 (0)9 / 863 39 80	Israel
ESCO DRIVES Culliganlaan 3 BE-1831 Diegem Phone: +46 (0)2 / 717 64 60	Belgium	Beijer Electronics Eesti OÜ Pärnu mnt. 160i EE-11317 Tallinn Phone: +372 (0)6 / 51 81 40	Estonia	ALFATRADE Ltd. 99, Paola Hill Malta-Paola PLA 1702 Phone: +356 (0)21 / 697 816	Malta	SIMPAS Jana Derku 1671 SK-911 01 Trenčín Phone: +421 (0)32 743 0472	Slovakia	CEG LIBAN Cebaco Center/Block A Autostrade DORA Lebanon-Beirut Phone: +961 (0)1 / 240 445	Lebanon
KONING & HARTMAN B.V. Woluwelaan 31 BE-1800 Vilvoorde Phone: +32 (0)2 / 257 02 40	Belgium	Beijer Electronics OY Vanha Nurmijärventie 62 FIN-01670 Vantaa Phone: +358 (0)207 / 463 500	Finland	INTEHISIS SRL bld. Traian 23/1 MD-2060 Kishinev Phone: +373 (0)22 / 66 4242	Moldova	INEA RBT d.o.o. Stegne 11 SI-1000 Ljubljana Phone: +386 (0)1 / 513 8116	Slovenia	ADROIT TECHNOLOGIES 20 Waterford Office Park 189 Witkoppen Road ZA-Fourways Phone: +27 (0)11 / 658 8100	South Africa
INEA RBT d.o.o. Stegne 11 SI-1000 Ljubljana Phone: +386 (0)1 / 513 8116	Bosnia and Herzeg.	PROVENDOR OY Teljänkatu 8 A3 FIN-28130 Pori Phone: +358 (0)1 / 522 3300	Finland	HIFLEX AUTOM. B.V. Wolwevestraat 22 NL-2984 CD Ridderkerk Phone: +31 (0)180 / 46 60 04	Netherlands	Beijer Electronics Automation AB Box 426 SE-20124 Malmö Phone: +46 (0)40 / 35 86 00	Sweden		
AKHNATON 4, Andrei Lipachev Blvd., PO Box 21 BG-1756 Sofia Phone: +359 (0)1 / 817 6000	Bulgaria	UTECO A.B.E.E. 5, Mavrogenous Str. GR-18542 Piraeus Phone: +30 (0)211 / 1206-900	Greece	KONING & HARTMAN B.V. Haarlebbergweg 21-23 NL-1101 CH Amsterdam Phone: +31 (0)20 / 587 76 00	Netherlands	OMNI RAY AG Im Schörlis CH-8600 Dübendorf Phone: +41 (0)44 / 802 28 80	Switzerland		
INEA CR Losinjka 4 a HR-10000 Zagreb Phone: +385 (0)1 / 36 940 - 017 - 02 / -03	Croatia	MELTRADE Kft. Fertő utca 14, HU-1107 Budapest Phone: +36 (0)1 / 431-9726	Hungary	Beijer Electronics AS Postboks 487 NO-3002 Drammen Phone: +47 (0)32 / 24 30 00	Norway	OOO "CSC-AUTOMATION" 4-B, M. Raskovoy St. UA-02660 Kiev Phone: +380 (0)44 / 494 33 44	Ukraine		
AutoCont C.S. S.R.O. Kafkova 1853/3 CZ-702 00 Ostrava 2 Phone: +420 595 691 150	Czech Republic	T00 Kazpromavtomatika Ul. Zhambyla 28 KAZ-100017 Karaganda Phone: +7 7212 / 50 10 00	Kazakhstan	Fonseca S.A. R. João Francisco do Casal 87/89 PT-3801-997 Aveiro, Esqueira Phone: +351 (0)234 / 303 900	Portugal				



Mitsubishi Electric Europe B.V. / FA - European Business Group / Gothaer Straße 8 / D-40880 Ratingen / Germany / Tel.: +49(0)2102-4860 / Fax: +49(0)2102-4861120 / info@mitsubishi-automation.com / https://eu3a.mitsubishielectric.com

Art. no. 272705-A / 01.2014 / Specifications subject to change / All trademarks and copyrights acknowledged.

